

# **Nexcopy Incorporated**



## **Drive Wizard**



# Copyright Notice

Copyright © 2008 Nexcopy Incorporated. All rights reserved.

This manual and the accompanying illustrations may not be copied, reproduced, electronically transmitted, or translated into another language, in whole, or in part, without the written consent of Nexcopy Incorporated.

Nexcopy Incorporated, logos, company marks, product model numbers and branding are trademarks of Nexcopy.

Other trademarks referred to in this manual are the property of their respective trademark or registered trademark holders.

## Warranty

Nexcopy Incorporated warrants to the original purchaser the devices you have purchased are free from defects in materials and workmanship, for a period of one year from the date of purchase.

The warranty is not transferable. This warranty does not apply to malfunctions cause by misuse, negligence, accident, miss configuration, or alteration, nor is Nexcopy Incorporated responsible for consequential damages related to the use of these devices. This warranty is made in lieu of any other warranty expressed or implied. Use of Nexcopy products and/or equipment is an implied agreement of such terms and conditions.

## **Piracy and Intellectual Property Rights**

The copying of audio, video, software or other digital content without the permission of the copyright holder is illegal. Nexcopy Incorporated accepts no responsibility for the copyright use or misuse of these devices or software. It is the sole responsibility of the user to ensure legal rights of copyright material, digital content and intellectual property are respected and legally authorized before engaging in production activity.

## **About Nexcopy Incorporated**

Thank you for purchasing Nexcopy's advanced USB Flash Drive solution(s). Nexcopy manufactures a variety of flash memory duplication systems for data loading to USB, SD, microSD, CF and other flash memory devices. Our product line is continually growing, so if additional memory device data loading systems are needed, please visit [www.nexcopy.com](http://www.nexcopy.com) . We hope you will consider us for all your production needs.

## **Drive Wizard Manual**

The Nexcopy Drive Wizard software is a user-friendly program to facilitate content loading to flash memory devices using one of the four licensed technologies offered.

## **Supported Operating Systems**

The Drive Wizard can be run on:

- Windows 10 +

Windows XP and Windows 7/8 are no longer supported by Microsoft and therefore no longer supported by Nexcopy.

The Drive Wizard software requires Administrator rights.

**NOTE:** The resultant drives do not require Admin rights – only the production Drive Wizard software requires Admin rights.

## Drive Wizard Supports Four Solutions

Drive Wizard is a software suite which supports four technologies which Nexcopy offers. Please click the appropriate link below for the product purchased ↓

1. [Copy Protection](#)
2. [USB Encryption](#)
3. [Lock License](#)
4. [Disc License](#)

This User Manual will provide an over view of each. Click the link above to jump to the section which applies to your purchase.

## Technical Support:

Please read the entire section for the product purchased before contacting technical support. Nearly all questions are resolved with information provided in this User Manual, the videos mentioned in this document or the FAQ section posted on the Nexcopy support page(s).

# COPY PROTECTION

## Copy Secure Drives – USB Copy Protection

The general idea for USB copy protection are files to be viewed by anyone, but the files cannot be copied, duplicated, changed, screen captures, streamed, shared, printed, etc.

Drive Wizard will encrypt and data load the Copy Secure drive and include two additional programs which are the file viewing programs to access the copy protected content. These programs run 100% from the USB flash drive and do not require installation or Admin rights on the host computer.

1. PCViewer – For a Windows User
2. MacViewer – For a Mac User

Once the data load process is complete the USB will be write-protected. Said another way, the Copy Secure drive is read-only and it is impossible to delete, modify, format or remove the content. This is a device setting and set at the hardware level of the flash drive.

Please view the instructional video on the Copy Secure product page for the general idea on how the technology works. Video is more effective than pages and pages of screen shots and explanations.

Product webpage:

<https://www.nexcopy.com/usb-secure-flash-drives/copy-secure/>

1. The first video shows a content owner (you) how to data load the drive.
2. The second video shows a user (your customer) how to access the data.

## Copy Secure

USB Copy Protection

Copy Secure Video Tutorials - Two

### Copy Secure Video Tutorials - Two

The first video shows how to copy protect data on a Copy Secure flash drive.

The second video shows how to view copy protected data on a Copy Secure flash drive.

Video 1 of 2

**Video(s)**



**Please view the videos before moving along in User Manual.**

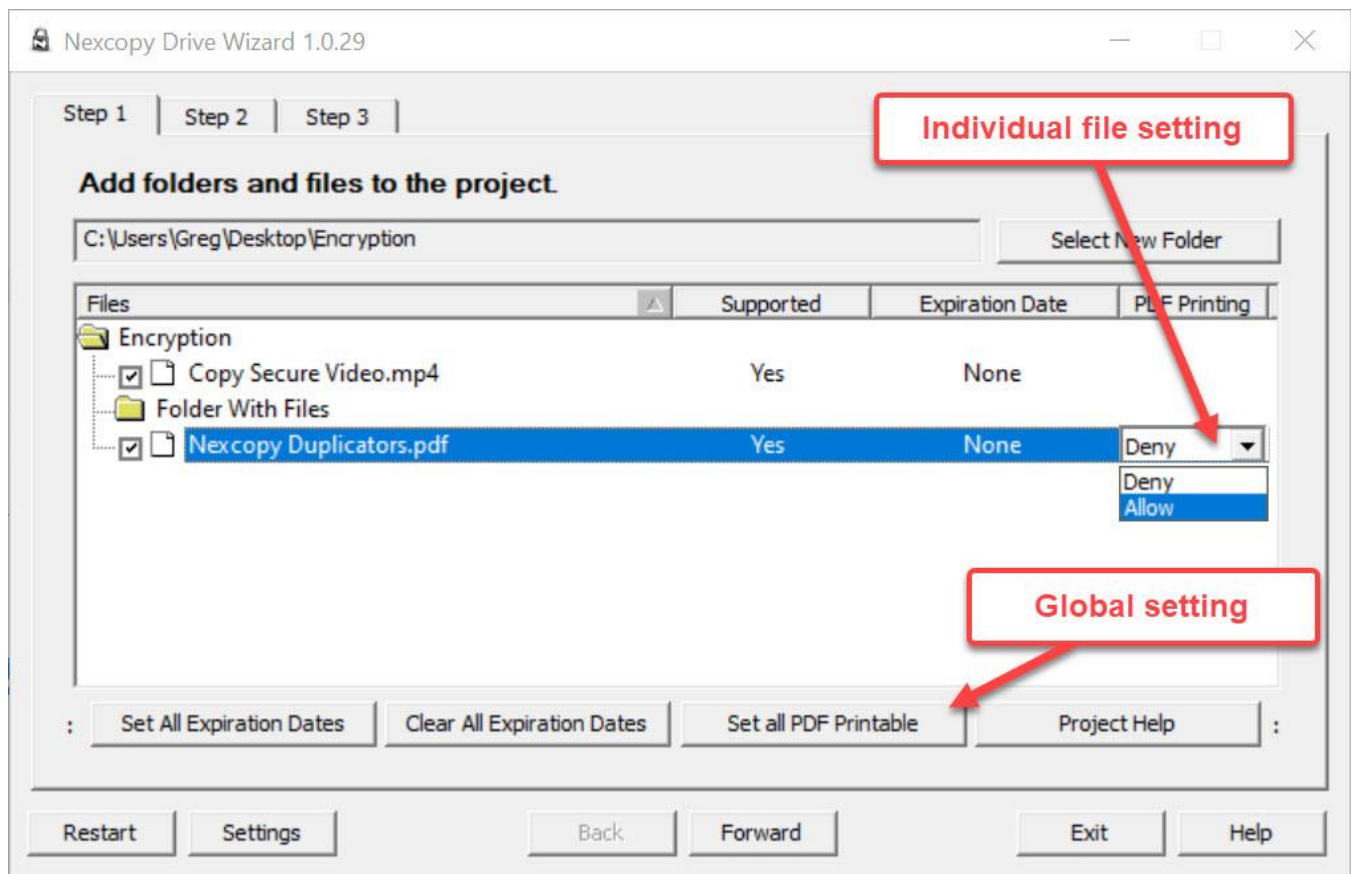
## DRM Features

Copy Secure drives offer some Digital Rights Management capabilities.

1. Set Files to be printable
2. Set Files to have expiration date
3. Set device to have a password

## File to be Printable

By default, the software will print restrict files. The content owner may turn on printing capability. Note: When printing is enabled, we still restrict the ability to print the file to PDF format. The Viewer applications will only allow printing to a physical printer.

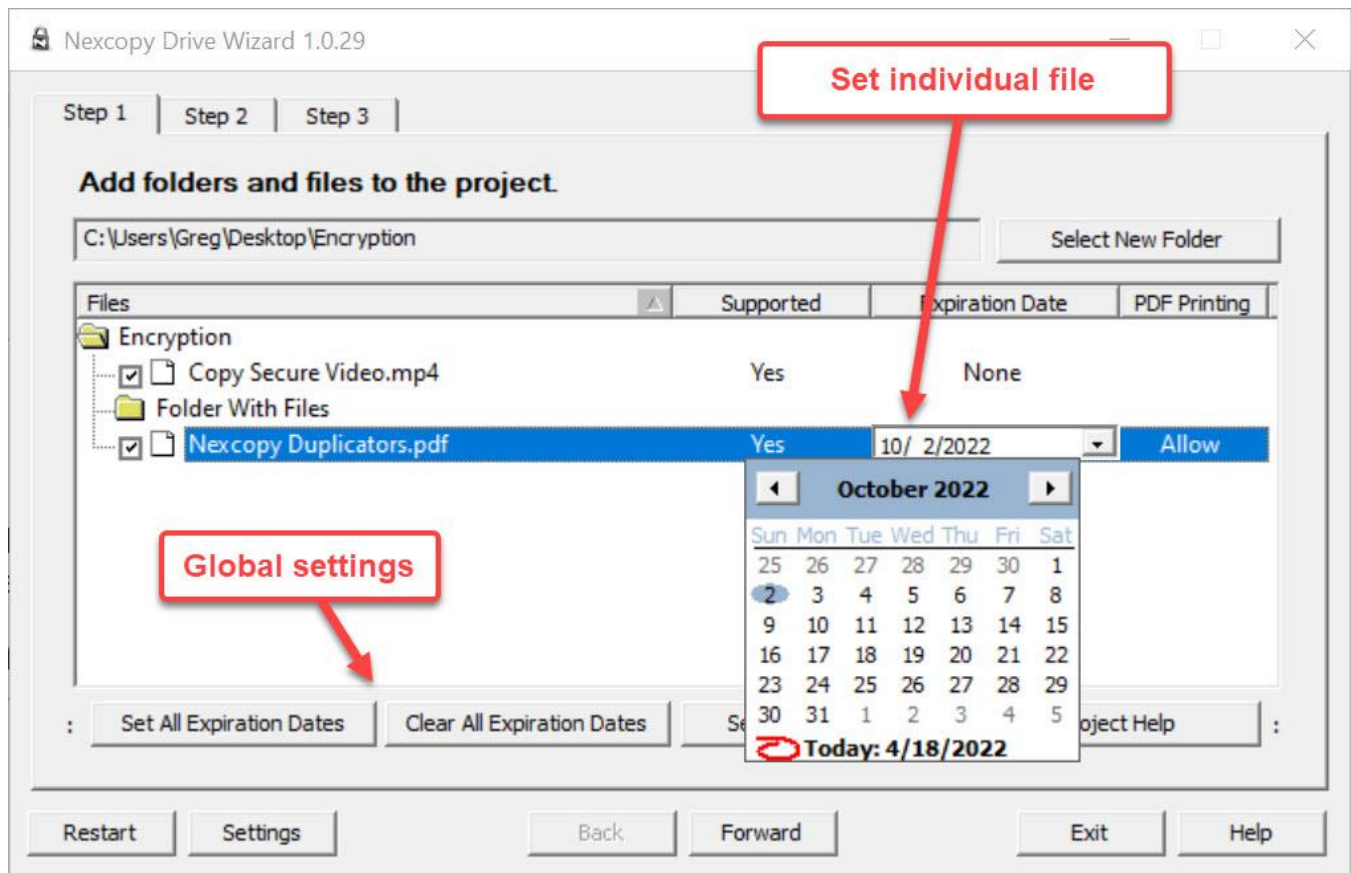


## File to Have Expiration Date

There is no file expiration date set as a default. When the expiration date is set we did allocate a 24 hour window between the expiration date and time to when the file is no longer accessible. This is Nexcopy's solution for dealing with international time zones.

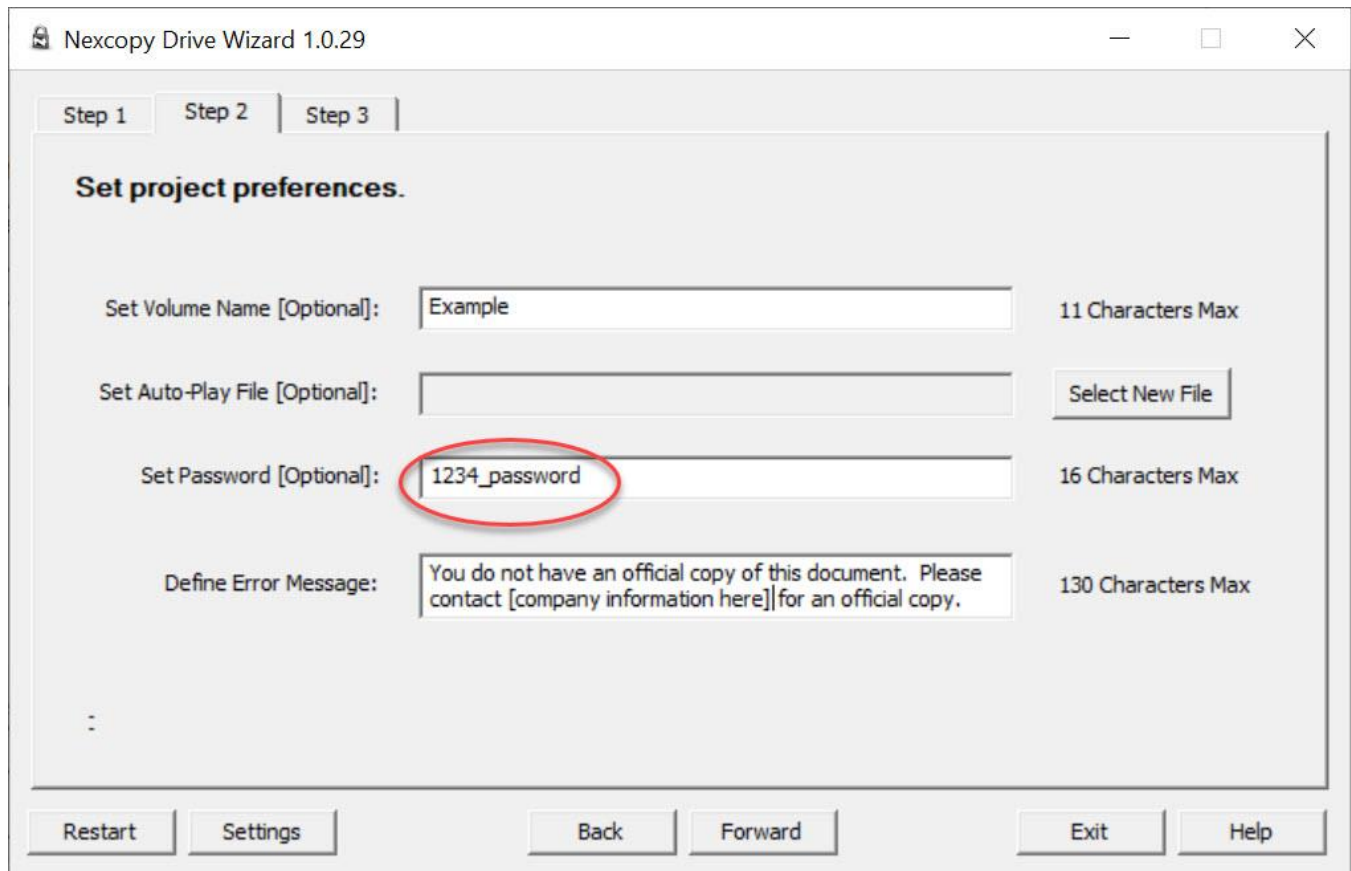
For example, if October 2<sup>nd</sup> was selected as the expiration date, for some users the file will expire on October 3<sup>rd</sup>.

When a file is expired it means the Viewer applications will no longer display the file. An error message will display "File is no longer accessible."



## Set Device to Have a Password

The PCViewer and MacViewer can be assigned a password. This is optional provides an additional layer of security. Content owners may set the password during the data load process.

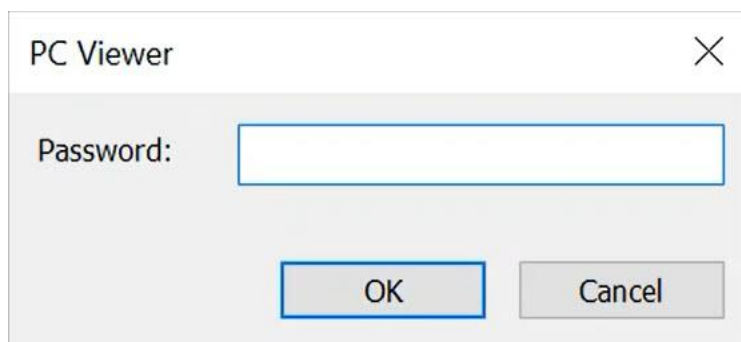


The image shows the 'Nexcopy Drive Wizard 1.0.29' window, specifically the 'Set project preferences' screen. The window has three tabs: 'Step 1', 'Step 2', and 'Step 3'. The 'Set project preferences' section contains four input fields with their respective labels and character limits:

- Set Volume Name [Optional]:** A text box containing 'Example' with a '11 Characters Max' limit.
- Set Auto-Play File [Optional]:** A text box with a 'Select New File' button next to it.
- Set Password [Optional]:** A text box containing '1234\_password' with a '16 Characters Max' limit. This field is circled in red.
- Define Error Message:** A text box containing 'You do not have an official copy of this document. Please contact [company information here] for an official copy.' with a '130 Characters Max' limit.

At the bottom of the window, there are buttons for 'Restart', 'Settings', 'Back', 'Forward', 'Exit', and 'Help'.

The User experience is the same when entering a password in the PCViewer or Macviewer. Below is example of PCViewer password interface.



The image shows the 'PC Viewer' window, which is a simple dialog box for entering a password. It has a title bar with 'PC Viewer' and a close button (X). The main area contains a label 'Password:' followed by a text input field. Below the input field are two buttons: 'OK' and 'Cancel'.

# Notes:

## **PDF Files**

The original or unprotected PDF cannot have security settings from Adobe or other 3<sup>rd</sup> party program. Example, do not have print restriction, watermarking or time limits set by the PDF publishing program. All security will be applied by the Nexcopy Drive Wizard application.

Links within PDF files must be created via Adobe guidelines. For example, creating a bookmark hyperlink in Microsoft Word will not carry over as a working internal hyperlink, this type of link must be completed per the Adobe specification. It is suggested to create a single Copy Secure drive for testing before starting larger duplication projects.

At the time of this writing Adobe had [this link](#) as reference for creating hyperlinks.

## **MP4 Files**

The MP4 should be H.264 and saved for streaming. Part of a video file is the "atom." The atom is the meta-data of the video file. When saving for streaming this atom should be at the front of the file, but if you have an option to check the location please do so. Having the atom at the front of the file means the video will begin playing more quickly than the atom being at the end of the file.

Video files cannot encryption (layers) such as chapters.

At this time, we do not support subtitles.

If subtitles are required, it is recommended to make an additional MP4 video with the subtitles displayed as the video plays, embedded into the MP4 file itself.

## **HTML Files**

Many functions of Java are not supported once a file is encrypted. The best experience for web pages is writing inline HTML code.

For embedding video on web pages, we have found the following to be the best result for video playback with both Mac and Windows computers:

## Example:

```
<p>Video File</p>
<video id="copysecure_video" class="video-js vjs-default-skin vjs-big-play-centered" controls preload="auto"
width="900px"
    data-setup="{ 'fluid': true; }">
    <source src="includes/video/copysecure_video.mp4" type='video/mp4' />
    <p class="vjs-no-js">
        To view this video you must have Internet Explorer 9 or later installed. If you still are
        unable to view this video, please contact support.
    </p>
    <script src="video-js/video.js"></script>
</video>
<script type='text/javascript'>
    var myPlayer=videojs('copysecure_video');
    myPlayer.on('play', function() {
        if (this.textTracks().length > 0)
            this.textTracks()[0].mode = "showing";
    });
</script>
```

**NOTE:** Video-related header tags at the top of the template files should not be modified.

```
<p>Audio File</p>
<object width="300" height="50">
<param name="src" value="includes/audio/Example.mp3">
<param name="autoplay" value="false">
<param name="controller" value="true">
<embed src="includes/audio/Example.mp3" autostart="false" loop="false" width="300" height="50"
controller="true"></embed>
</object>
```

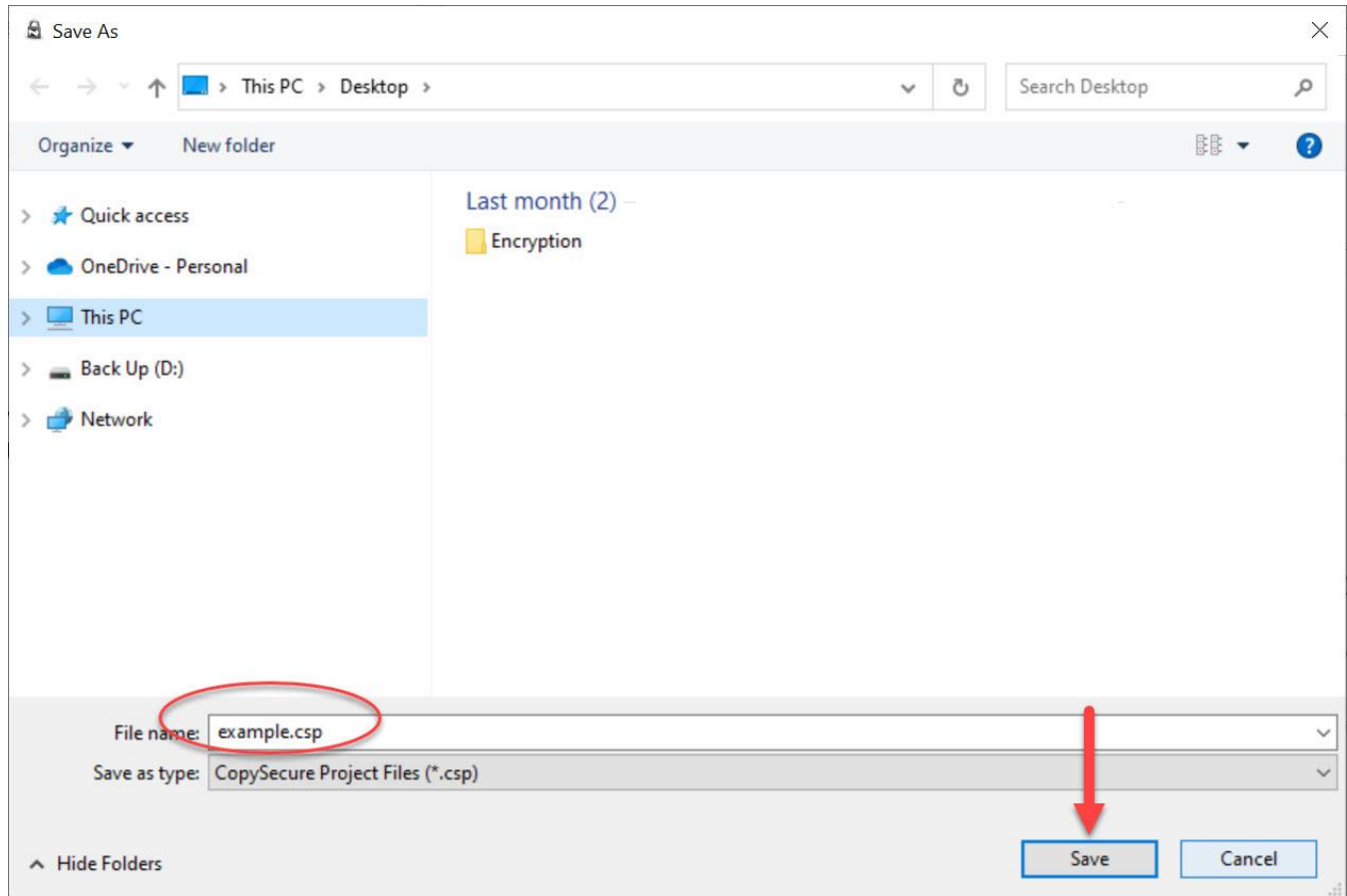
## TIP:

Nexcopy offers several templates of HTML files with embedded video and PDF files. Please use our template as a reference when building your web-based project, please download the following:

<https://www.nexcopy.com/downloads/exampledata.zip>

## Save / Load Project

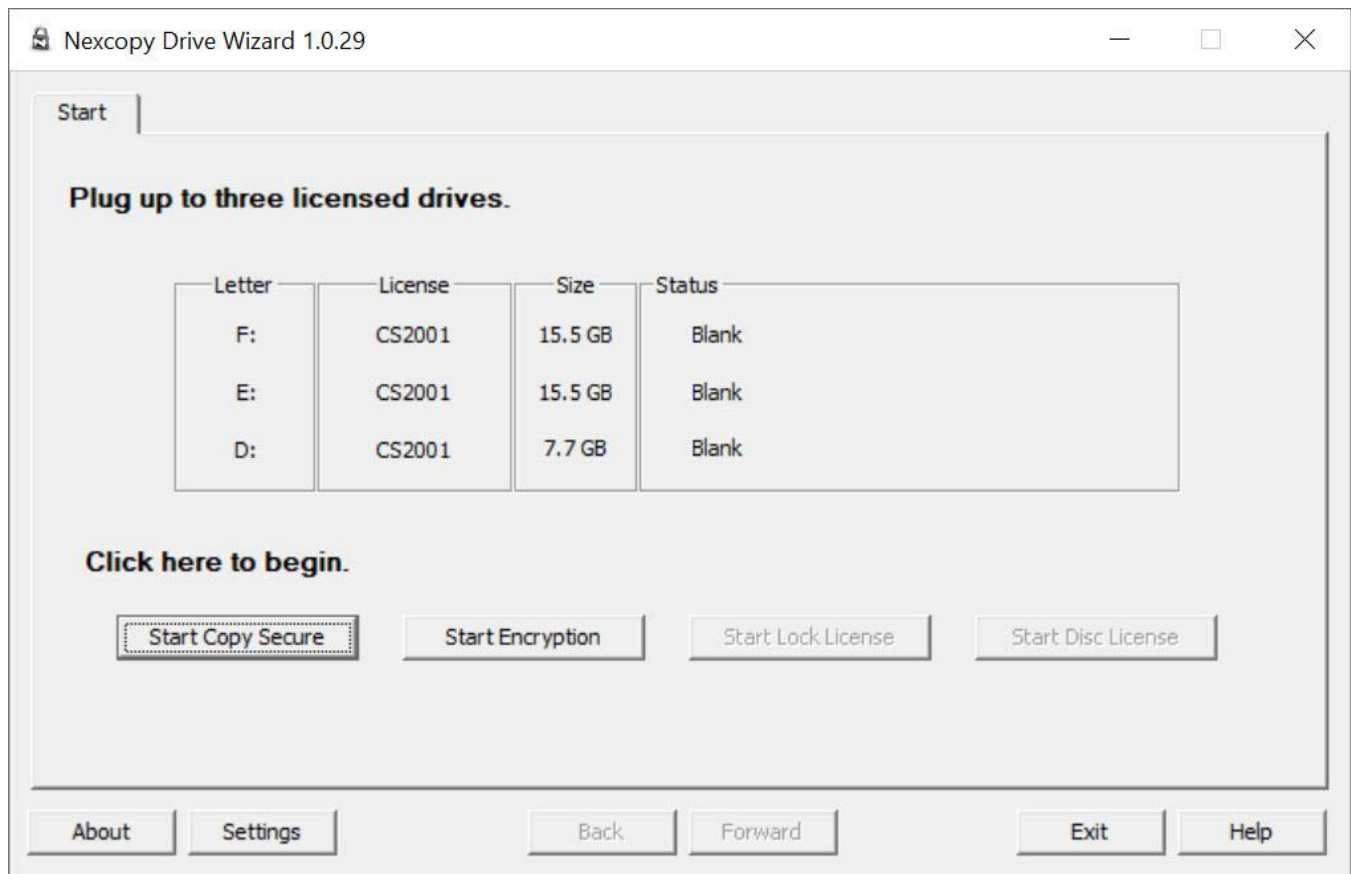
Save a project as a .csp (Copy Secure Project) file to quickly recall a previous job. The .csp file will maintain all settings of the project including data files, DRM settings and password.



Drive Wizard supports up to three Copy Secure drives using any available USB ports on your computer system.

Windows 10 or higher is required for the data loading.

Once the drive is created the content will play back (protected) in both Windows and Mac computer system.

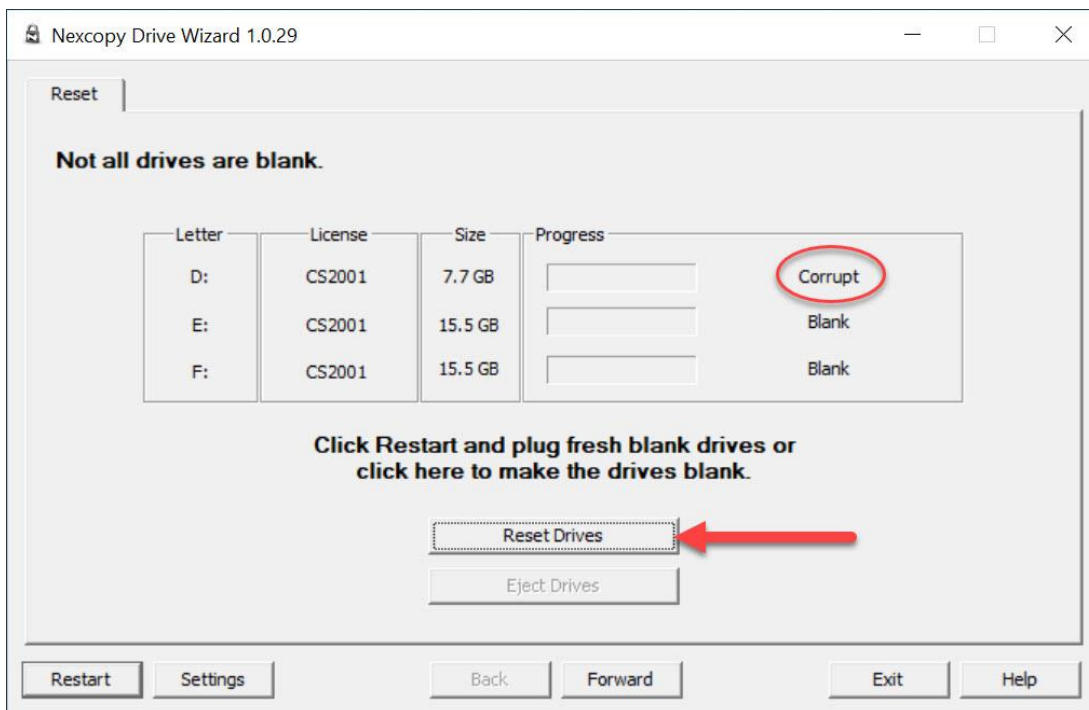
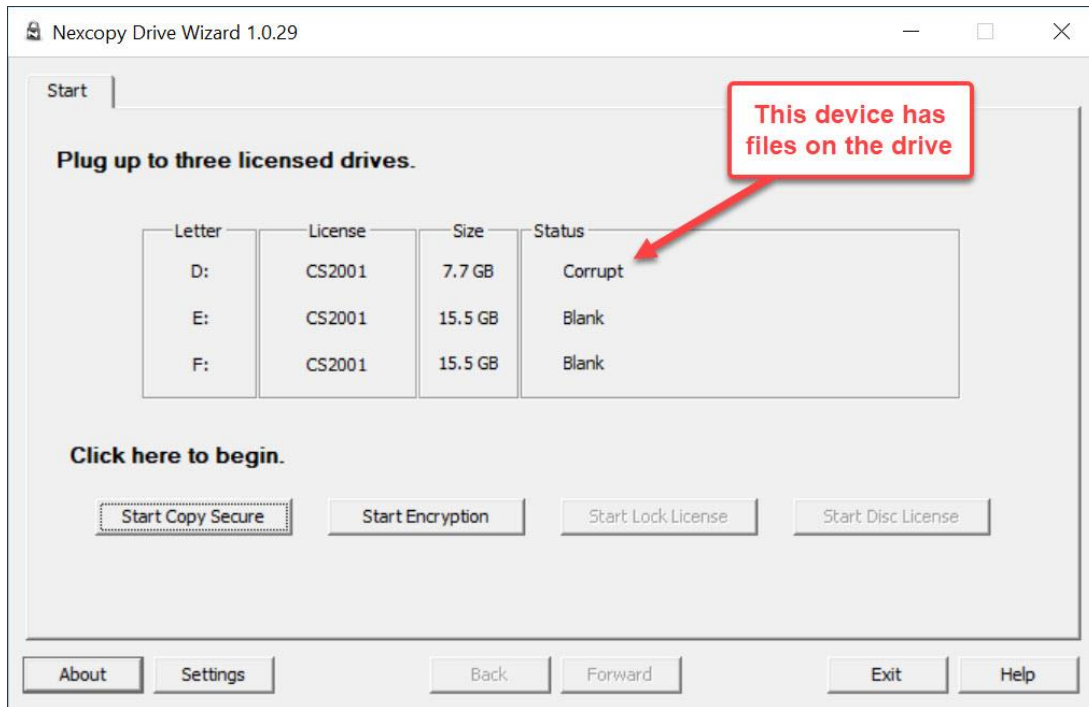


## Reset Flash Drive

The Drive Wizard software automatically detects the drive type connected and whether the drive is loaded with content or blank. If data is detected on the Copy Secure device, Drive Wizard will automatically reset the device before it allows a copy protection job to begin.

When Drive Wizard flags a Copy Secure drive as "corrupt" it simply means there are files on the drive which the Drive Wizard did not put there. The Copy Secure drives work as normal flash drives if the Drive Wizard is not used to data load the content.

Be sure to power cycle the drive after Reset. Disconnect, reconnect drive to PC.



Nexcopy has an FAQ page for the copy protection solution and is a great resource to find answers before contacting technical support.

<https://www.nexcopy.com/support/usb-copy-protection/>

# USB Encryption

## Copy Secure Drives Used as Encryption

USB encryption will assign a password which holds all the content. The content cannot be viewed until the correct password is entered.

Drive Wizard will encrypt and data load the Copy Secure drive and include two additional programs which are the gateways to access the content. These programs run 100% from the USB flash drive and do not require installation or Admin rights on the host computer.

3. PCViewer – For a Windows User

4. MacViewer – For a Mac User

The primary difference between encryption and copy protection is once a password is entered a user can do anything they wish with the file(s). Print, share, save, etc.

The encryption process does not have a file type limitation. Any file type can be encrypted.

Please view the instructional video on the USB Encryption product page for the general idea on how the technology works. Video is more effective than pages and pages of screen shots and explanations.

Product webpage:

<https://www.nexcopy.com/usb-secure-flash-drives/usb-encryption/>

3. The first video shows a content owner (you) how to data load the drive.

4. The second video shows a user (your customer) how to access the data.

# USB Encryption

USB Flash Drive Encryption

USB Encryption Video Tutorials - Two

## USB Encryption Video Tutorials - Two

The first video shows how to copy protect data on a Copy Secure flash drive.

The second video shows how to view copy protected data on a Copy Secure flash drive.

Video 1 of 2

**Video(s)**



**Please view videos before  
contacting technical support.**

USB encryption technology is designed for single use and small production applications. If mass production is required, or demands have exceeded the capability of the Drive Wizard software, please contact Nexcopy about the PRO series USB duplicator system which encrypt devices in bulk.

Drive Wizard supports a maximum of three Copy Secure drives per cycle and will use any available USB ports from the host computer.

# Lock License

## Lock License – USB Write Protection

Lock License technology is a flash drive which is always write protected by default but can be unlocked for data to be added or removed from the device. The default state of the drive is read-only.

Upon first use, the content owner (you) is required to assign a password to remove the write protection and make the USB writable. The password is only required when removing write protection. At no time is a password required for an end-user to read data from the drive.

There is no password hint or reminder and no way to recover the password if forgotten. In this situation the Lock License drive will remain permanently read-only.

Once power is cut from the device the Lock License drive is write protected. There is no requirement to set the write protection, this will automatically happen once the device is unplugged. This is a hardware configuration and follows the device and cannot be changed, manipulated or hacked.

Please view the instructional video on the Lock License product page for the general idea on how the technology works. Video is more effective than pages and pages of screen shots and explanations.

Product webpage:

<https://www.nexcopy.com/usb-secure-flash-drives/lock-license/>

## Lock License

USB Lock License

[Lock License Video Tutorial](#)

Lock License Video Tutorial

**Video**



# NEXCOPY

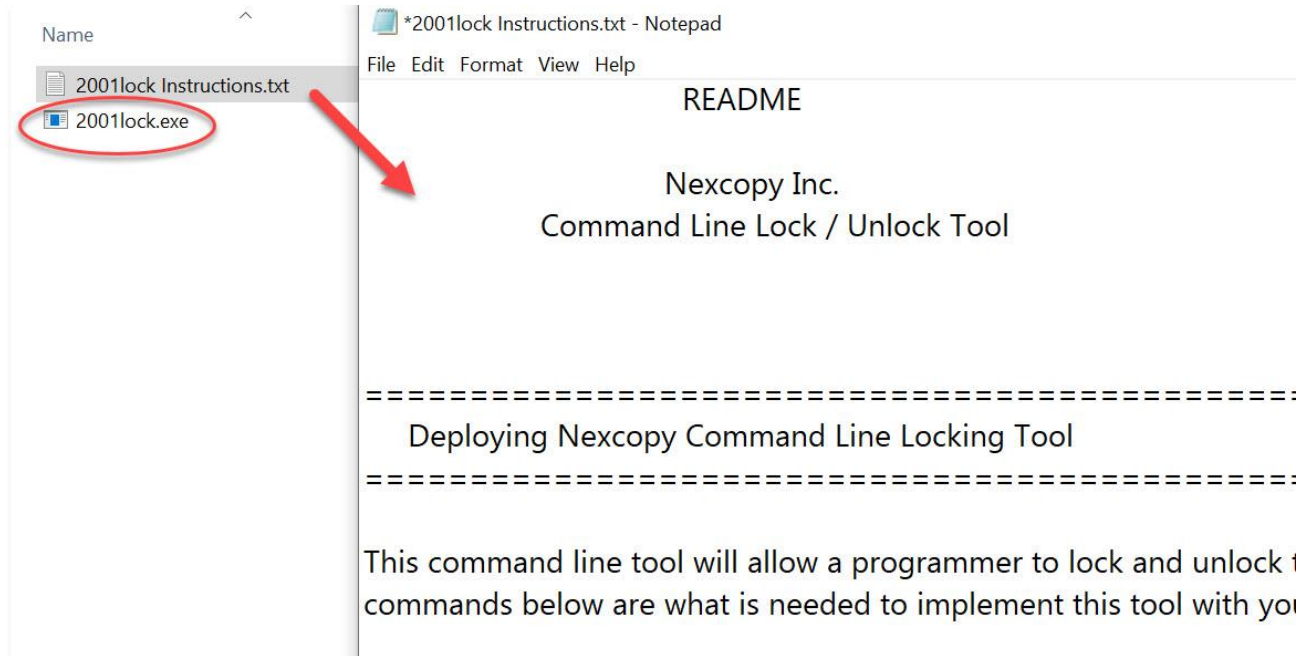
[Home](#) [Products](#) [Settings](#)

## Lock License

[USB Lock License](#)

**Please view the video before contacting technical support.**

Nexcopy offers a command line tool to remove the write protection programmatically. The command line tool is included with the Drive Wizard download and work with Lock License drives.



The Lock License technology is designed for single use and small production applications. If mass production is required, or demands have exceeded the capability of the Drive Wizard software, please contact Nexcopy about the PRO series USB duplicator system which write protects in bulk.

Drive Wizard supports a maximum of three Disc License drives per cycle and will use any available USB ports from the host computer.

# Disc License

## **Disc License – USB CD-ROM Flash Drive**

Disc License technology is a flash drive which appears and works like a CD-ROM disc.

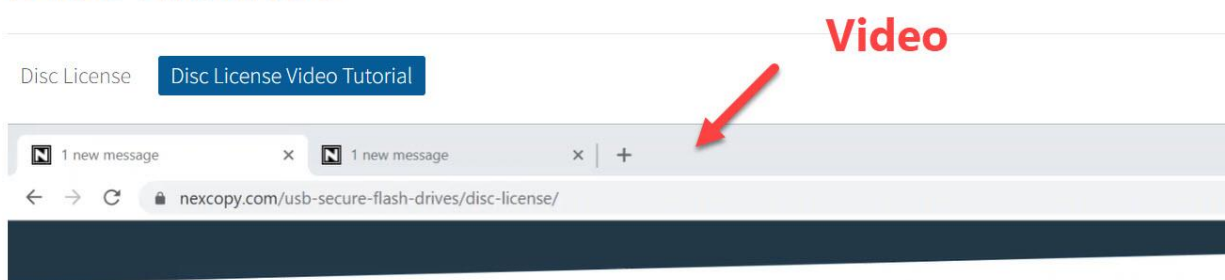
Using the Drive Wizard software, content owners may create a CD-ROM flash drive. This includes the ability to auto-play the device.

Please view the instructional video on the Disc License product page for general idea about how the technology works. Video is more effective than pages and pages of screen shots and explanations.

Product webpage:

<https://www.nexcopy.com/usb-secure-flash-drives/disc-license/>

## Disc License



## Disc License

**Disc License** Disc License Tutorial / Video

This is a blank USB Flash Drive Configured as a CD-ROM disc

GB capacity of the drive is the maximum size of ISO file which can be written.

This is a hardware solution, done at the controller level and cannot be hacked or manipulated.



**Please view the video before contacting technical support.**

The Disc License technology is designed for single use and small production applications. If mass production is required, or demands have exceeded the capability of the Drive Wizard software, please contact Nexcopy about the PRO series USB duplicator system which writes USB CD-ROM devices in bulk.

Drive Wizard supports a maximum of three Disc License drives per cycle and will use any available USB ports from the host computer.

# Technical Support:

Please visit our FAQ support page before contacting Nexcopy.

[www.nexcopy.com/support/](http://www.nexcopy.com/support/)

Email: [support@nexcopy.com](mailto:support@nexcopy.com)

Web: [www.nexcopy.com/contact/](http://www.nexcopy.com/contact/)

Phone: +1 949 481 6478

Pacific Time zone